



Baltimore Folk Music Society

Member, Country Dance & Song Society

www.bfms.org

January 2009

28th Annual BFMS Mid-Winter Ball

Saturday, January 31, 6:45 -11:30 pm

Chesapeake Room, Towson University

*Let us now to the Mid-Winter Ball
Invite you. This be no chance
For common folk with routine call,
To dance a hum-drum dance.
O no! It is a contra dance not to miss
With Elftones: Mara's fiddle; and guitar
Strummed by Roger; pure Gold, and Cis,
Our Fairy Queen and guiding star.
Be not Time's fool, bring rosy lips and cheeks
To this singular annual event
You have but brief hours and weeks
To buy a ticket, or miss it and lament!
Be there and dancing, or stand reproved,
At the contra dance event that is most loved.*



Travel back in time for a "Mid-Winter Night's Dream" – don your doublet, fasten your farthingale, and come to the sylvan woods where nothing is as it seems. **The Elftones (Mara Shea on fiddle and Roger Gold on guitar)** will enchant you with Irish, Scottish, Canadian, and old-time tunes, and Cis Hinkle will provide graceful and clear calling. Verily an evening of charm and excitement – games, amusements and diversions – and, of course, delightful dance. Tickets (\$26 members/\$32 others/\$12 students) can be purchased at most BFMS events, or at www.bfms.org, or by mail. Info: midwinter@bfms.org or 410-433-4419.

~~~~~

## Winter Coffeehouse Concert: Victoria Vox with Jessica McQuay and Joey Martone

Saturday, January 17, 7:30-9:30 pm (doors open 7 pm)

Woodbrook Baptist Church, 25 Stevenson Lane, Towson



Step away from the hum-drum and gray skies and join us for an evening with Baltimore-based singer/songwriter Victoria Vox. Enjoy a refreshing variety of original songs, punctuated with inspired renditions of classics like "Somewhere Over the Rainbow/It's a Wonderful World" and, of course, "Ukulele Lady," the venerable 1925 tune from Richard A. Whiting and Gus Kahn.

Victoria's music has been featured on NPR as well as in two independent films and the A & E show "Random 1." Her song "My Darlin' Beau" was awarded runner-up in the International Acoustic Music Awards. She also writes and performs songs in French, including the beautiful "C'est Noyé."

After a friend gave her a ukulele in the fall of 2004, she began immediately writing songs with it. Lately, she has found it is taking over more and more of her music. "The ukulele doesn't interfere with my range as much as a guitar, and because it's more simplistic, I feel that I move to different melodies than I would on the guitar," explains Victoria. "The ukulele has given some of my songs more of a jazz feel, which is mostly in song form more than anything. All of a sudden there was room for solos (which I do with my trumpetless trumpet.)"

Victoria will be appearing with local musicians Joey Martone and Jessica McQuay.

To find hear Victoria's music, check out her website: [www.victoriavox.com](http://www.victoriavox.com). For concert info contact Greg Shupe at [gregshupe@verizon.net](mailto:gregshupe@verizon.net) or visit [www.bfms.org](http://www.bfms.org). Admission at the door - \$8 BFMS members/\$4 kids 12 and under/\$16 families. \$10 Non-members/\$5 kids 12 and under/\$20 families.

## BFMS Sponsored Dances

### BFMS English Country Dance\*

*St. Mark's on the Hill, 1620 Reisterstown Rd, Pikesville*

1/3 mile inside the Baltimore Beltway, at Exit 20 South

Monday evenings, 8 - 10:30 pm; New dancer workshop 7:45 pm on the first Monday of each month

Jane Austen did it (and wrote about it). George Washington did it (but not with Jane Austen). You can too! Each dance is taught and walked through. You don't have to bring a partner. We always have live music and friendly dancers ready to welcome and teach new dancers. Admission: \$10/\$7 for BFMS members & affiliates. Info: [engdance@bfms.org](mailto:engdance@bfms.org) or [www.bfms.org](http://www.bfms.org)

*January 5:*

**Sharon McKinley** calling with **Judy Meyers** (piano), **Marty Taylor** (recorders, concertina), and **Karin Loya** (cello).

*January 12:*

**Michael Barraclough** calling to **Dick Hensold**, **Paul Oorts**, and **Jonathan Jensen**, who will be playing all or some of the following: Northumbrian small-pipes, Montgomery smallpipes, recorders, medieval greatpipes, seljefløyte, low whistle, classical guitar, harp guitar, cittern, string bass, and perhaps even something else.

*January 19:*

**Carl Friedman** calling to **Liz Donaldson** (piano), **Becky Ross** (fiddle), and **Colleen Reed** (flute).

*January 26:*

**Diane Schmit** calling to **Julie Gorka** (piano), **Walt Robinson** (recorders), and **Jeff Steinberg** (fiddle).

### BFMS American Contra & Square Dance\*

*Historic Lovely Lane Church, 2200 St Paul St.*

Wednesday evenings, 8 - 10:30 pm

New dancer orientation: 7:30 pm, 2nd and 4th Wednesdays

Music and dance styles include New England, Southern Appalachian, and Celtic. Nationally-known musicians and callers appear regularly, as well as local favorites. Dances are taught and walked through. No partner necessary. New dancers always welcome.

Admission: \$12/8 BFMS members and affiliates. Full-time students receive a \$3 discount. Snack contributions for the break are welcome. Info: [amdance@bfms.org](mailto:amdance@bfms.org) or [www.bfms.org](http://www.bfms.org)

*January 7:*

**Janine Smith** calling to the **Contra Rebels**: **Todd Clewell** on fiddle, **Henry Koretzky** on guitar, and **Bruce Campbell** on bass.

*January 14:*

**Kathy Angell** calls to the sweet sounds of **Sugar Beat**: **Elke Baker** on fiddle, **Susan Brandt** on flute, and **Marc Glickman** on piano. New dancer orientation at 7:30 pm.

*January 21:*

It's the fabulous **Baltimore Open Band** -- bring an instrument and join in! They'll be joined by someone we may or may not have seen recently... The caller is TBA, so stay tuned for details!

*January 28:*

**Ann Fallon** calls to the toe-tapping, foot-stomping sounds of **AP & the Banty Roosters**. **Andy Porter** on fiddle, **Mark Lynch** on mandolin, **Joe Langley** on guitar, and **Artie Abrams** on bass. New dancer orientation at 7:30 pm.

### Directions to Lovely Lane

From the North: Take I-83 south to the 28th Street/Druid Hill exit. Bera left and take 28th St. to Maryland Ave. Turn right on Maryland Ave then left on 23rd St.

From the South: I-95 to I-395, exiting for downtown Baltimore onto S. Howard and turning right onto Pratt. Once on Pratt, turn left onto Charles and then right onto 23rd St. Use parking lots on either side of 23rd St at St Paul. The church is on the right.



The Baltimore Folk Music Society is funded by an operating grant from the Maryland State Arts Council, an agency dedicated to cultivating a vibrant cultural community where the arts thrive. Funding for the Maryland State Arts Council is also provided by the National Endowment for the Arts, a federal agency, which believes that a great nation deserves great art.

## BFMS and Member Sponsored Dances & More

### Baltimore Open Band Practice ‡

*Sunday, January 11, 4 to 6 pm*

Come toot, snap, fiddle, and plink with the ever-lovin' Baltimore Open Band. This group is a community gem whose members meet on the second Sunday of each month in Catonsville. All ages, instruments, and levels are truly welcome. For more info, contact Susan Taylor at 301-982-1107 or [susantaylor@greenbelt.com](mailto:susantaylor@greenbelt.com)

### Singing for Everyone‡

*Sunday, January 4, 7 - 9 pm*

Homewood Friends Meetinghouse, 3107 N Charles

Join us for an evening of songs and company - all are welcome! Snacks are welcome but will be confined to the lunch room downstairs. On-street parking available -- meters do not run on Sundays. For more info, please contact Susan Warner at [scwarner@hotmail.com](mailto:scwarner@hotmail.com)

### BFMS Second Saturday Contra Dance \*

*Saturday, January 10, 8 - 11 pm; new dancer orientation at 7:35 pm*

St Mark's, 1620 Reisterstown Rd., Pikesville MD

Add warmth and fun to your life with our annual **BFMS Cabin Fever Festival**. We are excited to have the Celtic inspired band **Anadama** from the Boston area. This band features the talents of **Amelia Mason** on fiddle, **Emily Troll** on fiddle and accordion, and **Bethany Waickman** on guitar. Although the band has a polished, nuanced and intricate sound, all the musicians are in their twenties. We are equally excited to have **Rebecca Lay** as our caller. Rebecca is also an extremely talented 20 something. In honor of our young band and caller we extend a special invitation to 20 something dancers, and anyone who has ever been in their twenties and anyone who will be in their 20's. George Mercer, our dance fashion expert, will judge the Hawaiian shirt/tropical wear contest. The sun will shine warm and bright on this dance - sunglasses are encouraged.

A pot luck dinner precedes the dance. Bring your favorite summer picnic specialties or tropical delights. Baltimore's best Hawaiian dance teacher, **Kathleen Haller**, will share a short hula lesson at the break.

Admission: \$8 BFMS Members & Affiliates, \$12 non-members. Under 21 and full-time students with ID: \$5 members, \$6 non-members. Beginners, singles, couples, and families are welcome.

For more information call the **BFMS** hotline at 410-366-0808 or call Diane at 410-321-8419.

### BFMS Family Dance \*

*Saturday, January 10, 5 pm, potluck at 6:30*

St Mark's, 1620 Reisterstown Rd., Pikesville MD

Start the new year with great fun at our annual Cabin Fever Festival, featuring the band **Anadama**. This Boston-based band features **Amelia Mason** on fiddle, Emily Troll on accordion and fiddle, and **Bethany Waickman**. **Rebecca Lay** is an especially skilled young caller. Her style and enthusiasm blends well with the band. Hawaiian shirts, sunglasses and tropical wear are encouraged. The pot luck dinner at 6:30 will feature summer favorites for our indoor picnic.

All ages are welcome! We love to see 3 generations having a terrific time together. Please join us for the pot luck dinner that follows the dance -- bring a dish to share.

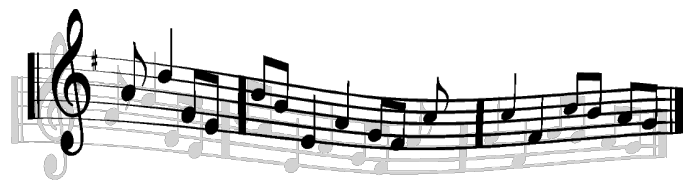
Admission is: \$5 members \$20 maximum member families, \$7 non-members \$28 maximum non-member families. Group discounts are available. No Experience necessary; you don't need to bring a partner.

For more information call the BFMS hotline at 410-366-0808 or Diane at 410-321-8419.

### English Open Band Practice ‡

*Sunday, Date TBA, 4-6 pm*

This is a rehearsed open band for English dancing. Newcomers welcome. For information, contact Eileen Franch, 410-889-3252 or [franch@juno.com](mailto:franch@juno.com). *If you have given Eileen your email address and not heard from her, please contact her again. Some addresses were lost due to human error.*



### BFMS Board Meeting \*

*Tuesday, January 6, 7:30 pm*

Board meetings are held on the first Tuesday of each month. Meetings are open to all BFMS members, and all are encouraged to attend. Ice cream social follows meeting. For directions, agenda, and other information, please contact the President (see page 7).

## BFMS & Member Sponsored Dances & More

### **Fourth at Four Storyfolk \***

*Sunday, January 25, 4 pm*

Towson Unitarian Universalist Church, 1700 Dulaney Valley Rd., Towson (One mile north of the Baltimore Beltway at Exit 27)

Storytellers and story enthusiasts get together to swap stories and performance ideas each month. This is an ideal place to try out new stories in front of a friendly and supportive audience. The Fourth at Four also plans and publicizes interesting performance opportunities in the greater Baltimore area. Please bring a beverage or a snack to share during the break. Everyone is welcome to join us, but we appreciate RSVPs so we don't inadvertently lock you out of the hall!

For information or to be added to our newsletter, contact Barbara Woodey at 410-252-1438 or [bellwoodey@prodigy.net](mailto:bellwoodey@prodigy.net); to RSVP, please contact Diane at 410-321-8419.

### **The Friendly Coffeehouse \***

*Friday, January 9, 8-11 pm*

*Calvary Baptist Church, 120 W Pennsylvania Ave., Towson*

Join us the second Friday of each month for an evening of music and more. Acoustic performers are invited to sign up for open mike slots (three songs or ten minutes). Friendly, supportive atmosphere with a music-loving audience that really listens! Parking lot in the back; piano inside. For info., call 410-825-0948; email [leahu@earthlink.net](mailto:leahu@earthlink.net); or check our website at [www.friendlycoffeehouse.org](http://www.friendlycoffeehouse.org) on the day of the event for any last minute changes.

### **Get into the spirit and bring along a friend!**

Have you considered inviting friends from your church, synagogue, or meditation group to dance with you? They'll probably enjoy it as much as you do! A personal invitation is the way the majority of us started contra dancing. Why not extend one or two invites to someone you know today? Pick flyers up at events or download them from [www.bfms.org/eventfliers.php](http://www.bfms.org/eventfliers.php).

*Rebecca Denison, Publicity Chair*

### **Norwegian Dance & Potluck‡**

*Saturday January 3, potluck 6:30 pm, dancing 8 pm*  
6212 Twenty Year Chase, Columbia MD

Norwegian-style house party. Mesmerizing live music by local world-class Loretta Kelley on the unique Hardanger fiddle (w/sympathetic strings under the bowed strings--see [hfaa.org](http://hfaa.org)). Norwegian springars are quite different from the Swedish Hambo. Beginners welcome--we'll show you the moves. Bring clean shoes to wear, food to share, and \$\$ you can spare. Host is Deb Weinreich, (410) 953-0030. Info/dirs: Jenny, [pi@xecu.net](mailto:pi@xecu.net), (301) 371-4312.

### **International Folk Dancing‡**

*Saturdays (except January 3rd), 7:30-10:30 pm.*

Homewood Friends Meeting House, 3107 N. Charles St.

Dances from Europe, Israel and other countries of the Near and Middle East. Beginners welcome; no partner necessary. Admission \$2; first time free. Lessons given in first half hour. Al & Hildy Saunders 410-484-9392 (check answering machine message to confirm dancing is on) or Paul & Elise Kreiss 410-367-8194 (evenings & weekends) or [pkreiss@toadmail.net](mailto:pkreiss@toadmail.net) Across Charles St. from Museum Drive (just east of Johns Hopkins). Enter down outside stairs from side porch. Call to arrange handicapped access.

### **Ballroom Dancing & Lessons‡**

*Fridays, 8 pm*

*JHU ROTC Building*

Waltz, rumba, tango & more! Our 17th year; always free! From 39th St & University Pkwy go south onto San Martin Drive; take 3rd left into campus. Climb wooden stairs, south side of building. Don't pay to park. Special: MarbleTag at 7:50!! For info contact Dave/Anne Greene 410 599-3725.

**Submissions for the February Newsletter are due to the editor by January 10th. Please email to [newsletter@bfms.org](mailto:newsletter@bfms.org)**

**Please look at current listings for formatting. Thank you!**

## Other Dances

### Friday Night Dancers

*Fridays, 8:30 - 11:30 pm, Beginner Workshop 7:30*  
Spanish Ballroom, Glen Echo Park, MD

Contras with occasional squares. Live music. Beginners welcome. Admission is \$9, [info@fridaynightdance.org](mailto:info@fridaynightdance.org)

*January 2*

TBA calls to **Love Mongrels**.

*January 9*

**Dave Colestock** and the fabulous **Glen Echo Open Band**.

*January 16*

**Shawn Brenneman** and **Night Watch**.

*January 23*

TBA calls to **Waverly Station**.

*January 30*

TBA calls to **Floor Play**.

---

### Lancaster Contra Dance

*Saturday, January 17, 8 to 11 pm*

St. John's Episcopal, 321 W. Chestnut, Lancaster

PHD with **Steve Hickman** (fiddle) and **John Devine** (Guitar).  
**DeLaura Padovan** calling.

For information call Shane at (717) 431-7417 or  
[www.lancastercontra.org](http://www.lancastercontra.org).

---

### Arden Contra Dance

*Sunday, January 18, 2 - 5 pm; lesson at 1:30 pm*

Arden Gild Hall, Arden, DE.

**Susan Taylor** and **Susan Hankin** calling for the **Mason-Dixon Contra Dance Orchestra**. Potluck after dance. \$10. \$9. For info: (302) 478-7257 or <http://www.taylorismill.com/musicweb/ardnschl.htm>

---

### Frederick Contra Dance

*Saturday, January 24, 8 pm (workshop 7 pm)*

Trinity School, Frederick (by Harry Grove Stadium)

Start your year off on the right foot with a great dance in Frederick! **Ted Hodapp** will call dances to hot tunes provided by **Taylor Among the Devils**, featuring **Steve Hickman**, fiddle; **Jonathan Jensen**, piano; and **Marty Taylor**, wind instruments. General-\$8; Students-\$5; 12 and under \$4. Info/directions: [www.contradancers.com](http://www.contradancers.com) or call Boe Walker at 301.694.6794.

### FSGW Sunday Night Squares & Contras

*Sundays, 7:30 - 10:30 pm, Beginner Workshop 7 pm*  
Spanish Ballroom, Glen Echo Park, MD

Contras and squares for new and experienced dancers. No partner necessary. New dancers please arrive early. Admission \$12, \$9 for members, \$4 ages 17 and under. For info contact Robert Cox [dance@fsgw.org](mailto:dance@fsgw.org) or [www.fsgw.org](http://www.fsgw.org)

*January 4*

**Susan Taylor** calls to the **New Hip Trio**: **Joe DeZarn** on fiddle, **Liz Donaldson** on piano, and **Ralph Gordon** on bass.

*January 11*

**Bev Bernbaum** calls to **Anadama**: **Emily Troll** on accordion, **Amanda Mason** on fiddle, and **Bethany Waickman** on guitar.

*January 18*

**Shawn Brenneman** and **Night Watch**: **Naomi Morse** on fiddle, **Elvie Miller** on accordion & piano, **Owen Morrison** on guitar.

*January 25*

**Janine Smith** calls to **Alan Jabbour** on fiddle and **Ken Perlman** on banjo.

---

### Locust Lane Contra Dance

*2nd & 4th Friday, 8 - 11 pm, Free workshop at 7:30*  
Christ the Savior Orthodox Church, 5501 Locust Lane, Harrisburg PA

January 9

A Boston weekend: **Rebecca Lay** calls to **Anadama**.

January 23

**Karl Senseman** calls to **Julie's Paradox**.

January 30

Special 5th Friday Dance! Learn to "dance like a wiz" as **Dave Colestock** calls and offers style tips to the music of **Dancewiz**.

Admission \$9/\$8 members. For more info or directions, contact Dave Colestock at 717-770-1477 or [LocustLaneContra.freesevers.com](http://LocustLaneContra.freesevers.com)

---

### FSGW Family Dance

*Sunday, January 11, 3 pm*

Glen Echo Town Hall, 6106 Harvard St, Glen Echo

**Rebecca Lay** calls to **Anadama**. Admission \$5 for ages 4 and older. [fsgw.org](http://fsgw.org).

## More Dances

### Potluck and Dance 2Nite!

*Saturday, January 24, 7 pm (potluck before)*

Galesville Mem. Hall, 952 Galesville Rd, Galesville

Potluck Dinner 5:45 -7 pm. Dance 7-10 pm. Live music by **Leah Weiss, Gary Wright & Friends**. Squares, longways sets, and circle dances called by **Janine Smith**. No partner, experience, or lessons necessary. ALL AGES WELCOME. Adults:\$10, Ages 10-18 \$5, Under 10 FREE. Call (301) 926-9142 for more info/questions.



### FSGW English Country Dancing

*Wednesdays 8-10:30 pm*

Glen Echo Town Hall, 6106 Harvard St, Glen Echo

\$10/\$8 members. More info: 301-320-2469, 301-229-3577, or [English@fsgw.org](mailto:English@fsgw.org). Live musicians each week, see website for details. Callers listed below.

*January 7*

**Michael Barraclough** calls to **Dick Hensold** (pipes and winds), **Ralph Gordon** (cello) and **Liz Donaldson** (piano)

*January 14*

**Melissa Running** calls to music by **Becky Ross** (fiddle), **Laurie Mielke** (recorders) and **Julie Gorka** (piano).

*January 21*

**Dan Gillespie** calls to **Judy Kleppel** (oboe), **Bruce Edwards** (concertina and bassoon) and **Liz Donaldson** (piano).

*January 28*

**Anna Rain** calls to **Jeff Steinberg** (fiddle), **Karin Loya** (cello) and **Melissa Running** (piano).



### Hot Squares Holiday Dance Party

*Thursday, January 1, 3 - 5:30 pm, potluck after*

Cherry Hill RV Park Conf Center, 9800 Cherry Hill Rd., College Park

Start the New Year the right way! Come dance with us. The **Hot Square Babes** will call squares to driving tunes played by **Tom Lyons**, fiddle; **Geff King**, bass; and **Matt Levine**, guitar.

Admission: \$8:00. Refreshments to share are welcome.

Info: 410-268-0231 or 301-947 2231 or <http://www.hotsquares.info/>

### Glen Echo Afternoon Waltz

*1st & 3rd Sundays, 3 pm lesson, 3:30 - 6 dancing.*

Spanish Ballroom, Glen Echo Park, Glen Echo, MD

Dance to a lively mix of folk waltzes with a few other couples dances, including Hambo, Schottische, Swing, Tango, and Polka. Admission is \$8 per person. For info: go to [www.WaltzTimeDances.org](http://www.WaltzTimeDances.org), e-mail [info@WaltzTimeDances.org](mailto:info@WaltzTimeDances.org), or call Glen Echo Park at 301-634-2222.

*January 4: Green Light Karma.*

*January 18: Night Watch.*



### Scandinavian Dance Classes

*Tuesdays, 7:30 - 9:30 pm*

NIH, Bethesda, MD (ID required to enter facilities)

Advanced Class: January 13 \* 7:30 - 9:30 pm

In the Beginning Class (January 6 & 27), learn Hambo, Schottish, Waltz, Zwiefacher, and other couple turning dances. Some Hambo is done every time.

In the Advanced Class (January 13), learn dances from Boda, Orsa, Rättvick, Ragunda, and Föllinge, as well as Finnskogspols, Nigpolska, Gammalvånster, and requests.

Singles, couples, beginners, and advanced dancers welcome. Sometimes live Swedish fiddle music. Wear smooth-soled shoes for turning, not running shoes. \$5. Info: Lisa Brooks at 240-731-1935, [lisa@HamboDC.org](mailto:lisa@HamboDC.org), or [www.HamboDC.org](http://www.HamboDC.org). Go to web site to get map for directions and parking! New entrance to NIH -- be sure to check web site for info!



### Annapolis Traditional Dance Society Contra

*Saturday, January 17, 7 p.m.; workshop 6:30*

Annapolis Friends Meeting Hall, 351 Dubois Road

Traditional American Contra and Square Dancing. Charm City's **Greg Frock** visits Annapolis to call dances to the music of the **New Hip Trio** (**Joe DeZarn**, fiddle; **Ralph Gordon**, bass; **Liz Donaldson**, piano).

Admission for dance, \$10 with discounts for seniors, students, families and members of ATDS. All ages welcome. All dances taught and walked through. No experience or partner required. Snacks to share at the break are welcome!

Questions?? Contact Jan Scopel at 443-540-0867 or [janscope@hotmail.com](mailto:janscope@hotmail.com); [www.contradancers.com/atds](http://www.contradancers.com/atds)

## More Dances & Concerts

### Slow Blues & Swing with DJ Mike Marcotte

*Sundays, January 11 & 25, 7 - 11 pm*

Glen Echo Town Hall, Glen Echo

The event begins at 7 with a 90-minute slow blues dance workshop taught by **Donna Barker** and **Mike Marcotte**. The dance begins at 8:30 with Mike playing classic and new selections of slow blues and swing tunes. \$15 for the workshop and dance; or \$8 for the dance only (for dance only, please arrive no earlier than 8:15 pm). See web site for parking instructions.

For more information, call Donna Barker at 301-634-2231 or Glen Echo Park at 301-634-2222, or [www.DanceDC.com](http://www.DanceDC.com).

---

### Zydeco Dance

*Sunday, January 11, 3 - 6 pm*

Spanish Ballroom, Glen Echo Park

Join us at 3 pm for a 30-minute Zydeco dance lesson taught by Michael Hart and Sharon Schiliro. The dance begins at 3:30 pm with Brad Randall & the Zydeco Ballers playing Zydeco, Cajun 2-step, and waltz. Admission is \$15. Info: Michael Hart at 301.762.6730 or [www.DancingbytheBayou.com](http://www.DancingbytheBayou.com). For more information, call Michael Hart at 301-762-6730 or [www.DancingbytheBayou.com](http://www.DancingbytheBayou.com).

---

### Cajun Dance

*Thursday, January 15, 7:30 pm*

Los Arrieros, 7926 Georgia Ave, Silver Spring

Cajun dancing to **Sammy Naquin & the Zydeco Whips with Al Berard**. \$15. For more info, 301-585-8813.

---

### Shepherdstown Contra & Scandinavian Dance

*Saturday, January 24, 8 pm*

War Memorial Building, Shepherdstown WV

**Susan Taylor** teaches lively contra dances with breaks for many Scandinavian couple dances like the waltz, schottishe, hambo, Norwegian polka, polska and snoa to the music of **Hoag, Kelley and Pilzer** along with the staff and students of the Upper Potomac Scandinavian Fiddle Weekend in an open band. Please wear clean, soft-soled shoes. Potluck snacks at the break. Admission is \$10 adults, \$7 members, \$4 dancing kids under 12. For more information, check the web page at [www.smad.us](http://www.smad.us) or call Becky at (304) 876-2169. Located at corner of King & German Streets.

### Glen Echo Inaugural Ball

*Tuesday, January 20, 7:30 - 11 pm*

Spanish Ballroom, Glen Echo Park, Glen Echo

Not planning to go to one of the official inaugural balls downtown? Whatever your reason - bad traffic, security checks, looking for something fun off the beaten path - the Glen Echo Inaugural Ball's for you! Whether you voted red, white or blue, check your politics at the door, dance the night away and celebrate this historic occasion at Spanish Ballroom at Glen Echo Park. Black tie is completely optional; Hawaiian shirts will not be turned away! A smoke- and alcohol-free event. Proceeds benefit Glen Echo Park Partnership for Arts and Culture.

Swing, waltz and contra dancing with the **Idle Americans**, and the **Gigmeisters** with **Janine Smith**.

Tickets: \$20 at door or by sending check payable to: WMADI, 9609 Pinkney Court, Potomac, MD 20854. Purchase online at [www.fsgw.org](http://www.fsgw.org). For more info, call 301-717-4641 or visit [www.dancingplanetproductions.com](http://www.dancingplanetproductions.com)

Or purchase online at [www.fsgw.org](http://www.fsgw.org)

INFO: 301.717.4641; [www.dancingplanetproductions.com](http://www.dancingplanetproductions.com)

---

### Shepherdstown Contra Dance

*Saturday, January 3, 8 pm; workshop 7:30 pm*

War Memorial Building, Shepherdstown WV

**Eva Murray** calls to **The Metro Gnomes: Barb Schmidt** on fiddle, **McGregor Yasevitch** on fiddle, **Mark Vidor** on piano and **Bob Garber** on clarinet. Please wear clean, soft-soled shoes. Potluck snacks at the break. Admission is \$10 adults, \$7 members, \$4 dancing kids under 12. For more information, check the web page at [www.smad.us](http://www.smad.us) or call Becky at (304) 876-2169. Located at corner of King & German Streets.

## Concerts

### Uptown Concerts at Cellar Stage

*Fridays, 8 pm (doors open 7 pm)*

Faith Community United Methodist Church of Hamilton, 5315 Harford Rd, Baltimore

*January 16: Jay & Molly Unger.*

*January 23: Bill Staines.*

Tickets: 410-795-1041 or [uptownconcerts@gmail.com](mailto:uptownconcerts@gmail.com)

## Perry Hall Folk Music Night

*Saturday, January 3, 7 - 10 pm*

Perry Hall United Methodist Church, 9515 Belair Rd., Baltimore, MD 21236

Featured Performer: Susan Souza <http://www.susansouza.com/>  
Admission free, donations welcome. This is an "open mike" event. For more information, see [www.perryhallumc.org](http://www.perryhallumc.org) or contact [ndzimmer@comcast.net](mailto:ndzimmer@comcast.net) or 410-529-7176.

## FSGW House Concert: Barry O'Neill

*Saturday, January 31, 8 pm*

Cook's Treehouse, Laurel

**Barry O'Neill** is the sort of singer you could swap songs with in your living room, and three days later, he'd still be coming up with songs that you haven't yet heard yet. Even if you've never met him, plan to spend a memorable evening with someone you'll feel you have known for years.

\$15 suggested donation. Call the Cooks at 301-776-4314 for reservations and directions.

## Orrin Star in concert

*Saturday, January 10, 8:30 pm*

Guitars of Pikesville, 806 Reisterstown Rd

**Orrin Star** is an award-winning guitarist and mandolin player. He will play two sets with an intermission between. \$15. For info, call 410-415-5400 or visit [www.guitarsofpikesville.com](http://www.guitarsofpikesville.com) or [www.orrinstar.com](http://www.orrinstar.com).

## Shepherdstown Concerts

Reynolds Hall, Shepherdstown, WV

*January 10: Squeeze the Bag.* Kinder and gentler cousins of the great highland pipes, bellows-blown bagpipes are designed for playing indoors with other instruments and are mellow and expressive. Featuring **Eliot Grasso**, **Dick Hensold**, and **Laura MacKenzi**, along with **Bob Mitchell** and **Jerry O'Sullivan**.

*January 23: Scandinavian Fiddle Magic:* **Andrea Hoag** on fiddle, **Loretta Kelley** on hardanger fiddle, **Charlie Pilzer** on bass, along with **Bruce Sagan** on nyckelharpa and fiddle, fiddler **Julia Borland-Ferneborg** and Gammaldans master and fiddler **Goran Ohlssen** in an evening of haunting melodies and harmonies from the frozen North.

8 pm. \$15 adults, \$12 seniors, \$10 SMD members, \$8 students, For more information call Joanie at (304) 263-2531 or email [updf@earthlink.net](mailto:updf@earthlink.net), on the web at [www.smad.us](http://www.smad.us).

## Camps & Weekend Events

### CDSS Music and Dance Week

*August 16 - 23*

Timber Ridge, WV

If you're looking for a summer week filled with music, dance and song – try CDSS week at Timber Ridge, conveniently located within two hours of the Washington/Baltimore area. Four complete and interlocking programs – an adult English and American dance program, a family/children's program, an intensive American dance caller's workshop and a new program specifically for young dancers age 16 – 25. Singing, late night dance parties, art, nature walks, swimming, jamming and more will add to the fun. More information available at <http://www.cdss.org/programs/2009/timberidge.html>.

### Upper Potomac Pipers Weekend

*Friday, January 9-Sunday, January 11*

Shepherdstown, WV

Classes, individual tutoring and sessions for a wide variety of bellows-blown bagpipes, fiddle, flute and mixed instruments. Piping staff includes Eliot Grasso, Jerry O'Sullivan, Dick Hensold, Laura McKenzie, Bob Mitchell and Elke Baker on Scottish and Cape Breton Fiddle. For more info, see [www.squeezethebag.info](http://www.squeezethebag.info), call Joanie Blanton (304) 263-2531 or email [updf@earthlink.net](mailto:updf@earthlink.net).

### Scandinavian Fiddle & Dance Weekend

*Friday, January 23-Sunday, January 25*

Shepherdstown, WV

Dance workshops, instrumental classes, jam sessions and a Scan/Contra Dance in a weekend event for fiddle, dance and mixed instruments featuring mostly Scandinavian music. Program staff includes Andrea Hoag, Loretta Kelley, Charlie Pilzer, Julia Borland-Ferneborg, Bruce Sagan, Goran Ohlsson and more. For more information see the webpage at [www.scanfiddle.info](http://www.scanfiddle.info), call Joanie Blanton (304) 263-2531 or email [updf@earthlink.net](mailto:updf@earthlink.net).

### 27th Annual Chesapeake Dance Weekend!

*April 3-5, 2009*

Camp Letts, Edgewater

**Lisa Greenleaf**, **Kathy Anderson**, **The Latter Day Lizards**, **I-95 Breakdown**, and **Reveillons!** [www.fsgw.org](http://www.fsgw.org) and click on Chesapeake. Questions? Email [janineandmatt@msn.com](mailto:janineandmatt@msn.com).



# Baltimore Folk Music Society Membership Application

Today's Date: \_\_\_\_\_  
 Name: \_\_\_\_\_  
 Address: \_\_\_\_\_  
 City: \_\_\_\_\_ State: \_\_\_\_ Zip: \_\_\_\_\_  
 Phone: (H) \_\_\_\_\_ (W) \_\_\_\_\_  
 E-mail: \_\_\_\_\_

New member  Renewal  Address change  
 Do not list my:  Name  Address  Phone  E-mail  
 I do NOT want to receive e-mail notices of BFMS events

Enclose check payable to BFMS and mail to:  
 BFMS  
 P.O. Box 7134 Waverly Station,  
 Baltimore, MD 21218  
 or register online at [www.BFMS.org](http://www.BFMS.org)

- | Folkie Interests                                 | Volunteer Interests                                   |
|--------------------------------------------------|-------------------------------------------------------|
| <input type="checkbox"/> Contra dancing          | <input type="checkbox"/> Greeting / ticket taking     |
| <input type="checkbox"/> Cajun / zydeco          | <input type="checkbox"/> Sound system                 |
| <input type="checkbox"/> English dancing         | <input type="checkbox"/> Refreshments                 |
| <input type="checkbox"/> Coffeehouse / concerts  | <input type="checkbox"/> Newsletter                   |
| <input type="checkbox"/> Singing                 | <input type="checkbox"/> Graphic design—fliers, etc.  |
| <input type="checkbox"/> Storytelling            | <input type="checkbox"/> Hosting musicians / visitors |
| <input type="checkbox"/> Family / kids events    | <input type="checkbox"/> Website                      |
| <input type="checkbox"/> Dance / camp weekends   | <input type="checkbox"/> Other _____                  |
| <input type="checkbox"/> Instruments / open band |                                                       |

| MEMBERSHIP CATEGORIES AND PRICES                                                          |          |
|-------------------------------------------------------------------------------------------|----------|
| Student: 1 year (\$20) (no newsletter delivery)                                           | \$ _____ |
| Individual: 1 year (\$27) 2 years (\$50) 3 years (\$69)                                   | \$ _____ |
| Family: 1 year (\$37) 2 years (\$71) 3 years (\$93)                                       | \$ _____ |
| Newsletter only: 1 year (\$20)                                                            | \$ _____ |
| Donation:                                                                                 | \$ _____ |
| SPECIAL MEMBERSHIP:                                                                       |          |
| ____ Contributor (\$75) ____ Supporter (\$150) ____ Sustainer (\$250) ____ Patron (\$500) | \$ _____ |
| TOTAL ENCLOSED:                                                                           | \$ _____ |

**THE BALTIMORE FOLK MUSIC SOCIETY** is a nonprofit, educational organization dedicated to preserving and promoting folk music, dance, and tradition. Members receive the newsletter eleven times a year and are eligible for discounts to Society events by showing their membership card. BFMS is a member of the Country Dance and Song Society of America, and shares reciprocity arrangements with the Folklore Society of Greater Washington and the Annapolis Traditional Dance Society.

**Board Meetings** are held on the first Tuesday of each month. Meetings are open to the public and members are encouraged to attend. Please call or email the president (see right-hand column). For more information on any BFMS event, call the Hotline at 410-366-0808, or visit our web site: [www.bfms.org](http://www.bfms.org).

**Newsletter problems: Missing an issue? Check with the Membership Officer.**

**Late delivery? Please contact the Post-master.**

**Send us letters, articles, and event listings.** To get your event in the newsletter: Send submission as plain text no later than the 10<sup>th</sup> of the month preceding publication. Email submissions to [newsletter@bfms.org](mailto:newsletter@bfms.org)

## The Baltimore Folk Music Society 2008-2009 Board

|                  |                     |              |               |
|------------------|---------------------|--------------|---------------|
| President        | Dan Katz            | 410-799-5596 | president     |
| Past President   | Paul Ballard        | 410-242-2434 | pastpres      |
| Vice President   | Jan Caughlin        | 410-788-7611 | vicepres      |
| Secretary        | Joyce Duffy-Bilanow | 410-608-6731 | secretary     |
| Treasurer        | Tom Bryson          | 410-265-5386 | treasurer     |
| American Dance   | Carl Friedman       | 410-321-8419 | amdance       |
| Cajun/Zydeco     | Patsy Yaffe         | 410-653-2571 | zydeco        |
| English Dance    | Mike Franch         | 410-889-3252 | engdance      |
| Special Events   | Greg Shupe          | 410-448-3499 | specialevents |
| Membership       | Don Walters         | 410-922-5318 | membership    |
| Publicity        | Rebecca Denison     | 301-606-7115 | publicity     |
| Newsletter       | Noel-Marie Taylor   | 410-868-7861 | newsletter    |
| Members at Large | Tori Hokanson       | 443-889-2074 | mal1          |
|                  | Tricia Valentine    | 443-546-3392 | mal2          |
|                  | Quintin Aspin       | 301-261-5675 | mal3          |

## Committees

|                        |                         |              |                                                                        |
|------------------------|-------------------------|--------------|------------------------------------------------------------------------|
| Family                 | Diane Friedman          | 410-321-8419 | <a href="mailto:matchmaker2@comcast.net">matchmaker2@comcast.net</a>   |
| Sat. Dances            | Diane Friedman          | 410-321-8419 | <a href="mailto:matchmaker2@comcast.net">matchmaker2@comcast.net</a>   |
| Webmaster              | McGregor Yatsevitch     | 410-788-2761 | <a href="mailto:webmaster">webmaster</a>                               |
| Catoctin               | Matt Bieneman           | 410-799-9180 | <a href="mailto:catoctin">catoctin</a>                                 |
| Archivist              | Diane Alberga           | 410-744-7045 | <a href="mailto:archivist">archivist</a>                               |
| Hospitality            | Emily Aubrey/Greg Frock | 410-433-4419 | <a href="mailto:efiddlercrab@verizon.net">efiddlercrab@verizon.net</a> |
| Gate                   | Rich Pressman           | 410-486-5240 | <a href="mailto:richircine@yahoo.com">richircine@yahoo.com</a>         |
| Mid-Winter             | Emily Aubrey/Greg Frock | 410-433-4419 | <a href="mailto:midwinter">midwinter</a>                               |
| Playford Ball          | Tricia Valentine        | 443-546-3392 | <a href="mailto:playford">playford</a>                                 |
| Volunteer Co-ordinator | Nan Lyon                | 443-802-5357 | <a href="mailto:nanlyon@hotmail.com">nanlyon@hotmail.com</a>           |

All addresses @bfms.org unless otherwise noted.



Baltimore Folk Music Society  
 P.O. Box 7134  
 Waverly Station  
 Baltimore, MD 21218-0134  
 Change Service Requested

PRESORTED  
 FIRST-CLASS MAIL  
 U.S. POSTAGE PAID  
 HAGERSTOWN, MD  
 PERMIT NO. 227

## TIME VALUE

### January 2009

| Sunday                                                                                                                                                                                                                               | Monday                              | Tuesday                                                    | Wednesday                                            | Thursday                   | Friday                                                                                                                                           | Saturday                                                                                                                                                     |
|--------------------------------------------------------------------------------------------------------------------------------------------------------------------------------------------------------------------------------------|-------------------------------------|------------------------------------------------------------|------------------------------------------------------|----------------------------|--------------------------------------------------------------------------------------------------------------------------------------------------|--------------------------------------------------------------------------------------------------------------------------------------------------------------|
| <div style="border: 1px solid black; border-radius: 15px; padding: 10px; background-color: #e0e0e0;">           BFMS and member sponsored events are in <b>boldface</b>. See page numbers for full details on events.         </div> |                                     |                                                            |                                                      | Hot Squares <b>1</b><br>6  | <b>Ballroom Dance</b> <b>2</b><br>4<br>Glen Echo Contra 5                                                                                        | <b>Norwegian Dance</b> <b>3</b><br>4<br>Shprdstwn Contra 7<br>Perry Hall Concert 8                                                                           |
| <b>4</b><br>Singing/Everyone <b>3</b><br>FSGW Contra 5<br>Glen Echo Waltz 6                                                                                                                                                          | <b>5</b><br>English Dance <b>2</b>  | <b>6</b><br>Board Meeting <b>3</b><br>Scandinavian Dance 6 | <b>7</b><br>Contra Dance <b>2</b><br>FSGW English 6  | <b>8</b>                   | <b>9</b><br>Friendly Coffeehouse <b>4</b><br>Ballroom Dance <b>4</b><br>Glen Echo Contra 5<br>Locust Lane Contra 5<br>Pipers Weekend 8           | <b>10</b><br>Contra Dance <b>3</b><br>Family Dance <b>3</b><br>Internat'l Dance <b>4</b><br>Orrin Star Concert 8<br>Shphrdstwn Concert 8<br>Pipers Weekend 8 |
| <b>11</b><br>Open Band <b>3</b><br>FSGW Contra 5<br>FSGW FamDance 5<br>Slow Blues 7<br>Zydeco Dance 7<br>Pipers Weekend 8                                                                                                            | <b>12</b><br>English Dance <b>2</b> | <b>13</b><br>Scandinavian Dance 6                          | <b>14</b><br>Contra Dance <b>2</b><br>FSGW English 6 | <b>15</b><br>Cajun Dance 7 | <b>16</b><br>Ballroom Dance <b>4</b><br>Glen Echo Contra 5<br>Cellar Stage 7                                                                     | <b>17</b><br>Victoria Vox Concert <b>1</b><br>Internat'l Dance <b>4</b><br>Lancaster Contra 5<br>ATDS Contra 6                                               |
| <b>18</b><br>Arden Contra 5<br>FSGW Contra 5<br>Glen Echo Waltz 6                                                                                                                                                                    | <b>19</b><br>English Dance <b>2</b> | <b>20</b><br>Glen Echo Ball 7                              | <b>21</b><br>Contra Dance <b>2</b><br>FSGW English 6 | <b>22</b>                  | <b>23</b><br>Ballroom Dance <b>4</b><br>Glen Echo Contra 5<br>Locust Lane Contra 5<br>Cellar Stage 7<br>Shphrdstwn Concert 8<br>Fiddle Weekend 8 | <b>24</b><br>Internat'l Dance <b>4</b><br>Frederick Contra 5<br>Potluck/Dance 2Nite 6<br>Shprdstwn Contra 7<br>Fiddle Weekend 8                              |
| <b>25</b><br>4th at 4 Storyfolk <b>4</b><br>FSGW Contra 5<br>Slow Blues 7<br>Fiddle Weekend 8                                                                                                                                        | <b>26</b><br>English Dance <b>2</b> | <b>27</b><br>Scandinavian Dance 6                          | <b>28</b><br>Contra Dance <b>2</b><br>FSGW English 6 | <b>29</b>                  | <b>30</b><br>Ballroom Dance <b>4</b><br>Glen Echo Contra 5<br>Locust Lane Contra 5                                                               | <b>31</b><br>Mid-Winter Ball <b>1</b><br>Internat'l Dance <b>4</b><br>FSGW Concert 8                                                                         |